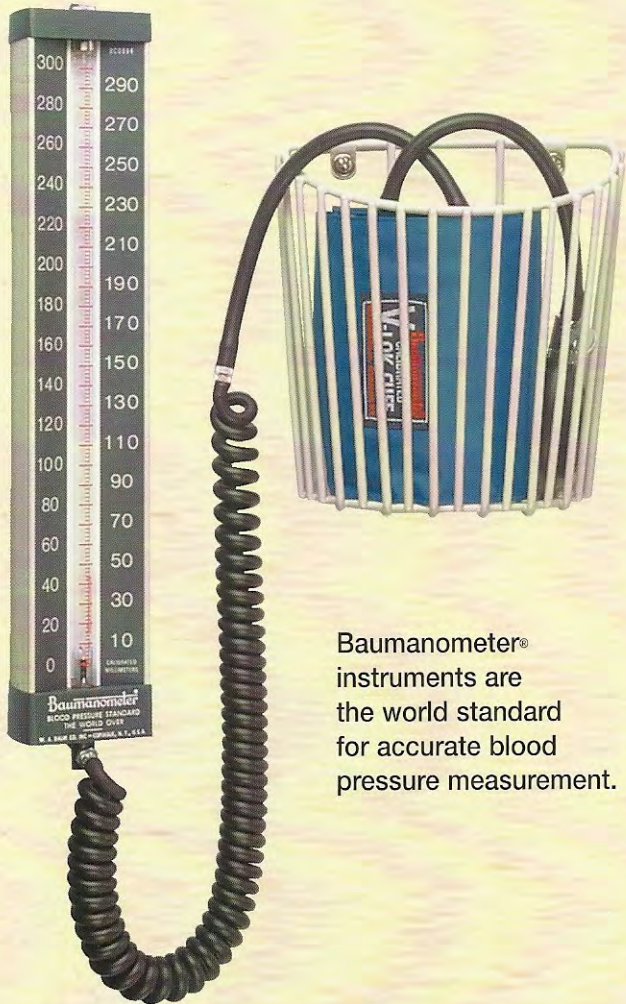
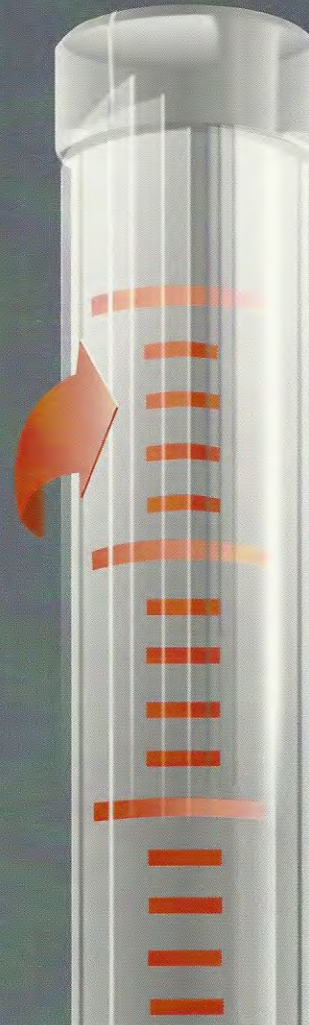


We've kept
the accuracy in



Baumanometer®
instruments are
the world standard
for accurate blood
pressure measurement.

We've taken
the concern out



Our Mylar® Clad
Calibrated Cartridge
Tube maintains its
structural integrity
if the glass breaks,
eliminating concern
over leakage.

Illustration depicts crystal-clear,
multi-layered Mylar® film process.

Two important reasons why hospitals are switching back to Baum

Accuracy - Baumanometer® instruments are the standard by which digital and aneroid pressure devices are calibrated. You can't get a more reliable blood pressure reading than with a Baumanometer® mercury-gravity instrument.

Safety - Since 1995, every Baumanometer® cartridge tube has been manufactured with several layers of super tough, crystal-clear Mylar® film which prevents leakage if the glass tube breaks.

Call 888-281-6061 for a simple demonstration of the accuracy and safety of World Standard Baumanometer® instruments. You will also learn how easy it is to upgrade older Baumanometer® instruments with Mylar® Clad Calibrated Cartridge Tubes. Once you see how concerns about mercury have been eliminated, you'll understand why hospitals all over the country are switching back to Baum.

Baumanometer®

The World Standard

W.A. Baum Co., Inc. • 620 Oak Street, Copiague, NY 11726 USA
888-281-6061 • 631-226-3940 • Fax: 631-226-3969 • www.wabaum.com • info@wabaum.com

Repair Parts

Mylar® Clad Calibrated Cartridge Tubes:

Made to fit Baumanometer® blood pressure instruments.

Cat. No.	Description
2100	260 mmHg fits Kompak, Hi/Lo® and Rx Models
2200	300 mmHg fits Standby® Model
2300	300 mmHg fits Desk Model, Panel Wall Model and Wall Unit 33.

Baumanometer® Guarantee:

Every Baumanometer® instrument is a precisely calibrated true gravity manometer. It is guaranteed to be and to remain scientifically accurate. The entire apparatus is guaranteed against defects in workmanship and material for a period of one year from date of purchase. **We guarantee the free replacement of the calibrated cartridge tube if it is ever broken.** These guarantees are invalid when other than genuine Baumanometer® parts are used.

Baumanometer® Service Kit:

Cat. No.	Description
2000	Baumanometer® Service Kit

The Baumanometer® Service Kit contains a selection of Mylar® Clad cartridge tubes, small tools, a comprehensive Service Manual and an assortment of frequently ordered repair parts. The box is made of high density polyethylene.

Customized Service Kits are available. When ordering please indicate the model or type of instrument in use at your facility.

Baumanometer® Test Kit:

Cat. No.	Description
2940	Calibration "Y" connector with 1 ft. 2911 latex tubing on each leg
2941	Calibration "Y" connector with 1 ft. 2911 latex tubing on each leg with #1890 Latex Bulb and Air-Flo® Control Valve

Calibration "Y" connector (To use your Baumanometer® instrument as a standard for pressure measurement.) NOTE: When used with a "Y" connector, any Baumanometer® instrument can be used to check the accuracy of any other blood pressure device.

Baumanometer® Service Manual:

The Baumanometer® Service Manual contains the following detailed information: instructions for instrument set-up, a preventative maintenance guide, procedures for testing (instrument accuracy, air leaks and mercury leaks), instrument repair and service, a trouble-shooting guide and schematic diagrams of the Kompak Model, Desk Model, Standby® Model and Wall Unit 33. Copies are available in English or Spanish.

The Clinical Measurement of Blood Pressure:

The source of the material in this booklet is the basic textbook "PRIMER OF CLINICAL MEASUREMENT OF BLOOD PRESSURE" by George E. Burch, M.D. and Nicholas P. DePasquale, M.D. of Tulane University School of Medicine, New Orleans, LA. Topics include: What is Blood Pressure, Blood Pressure Apparatus, Technique of Measurement and Sources of Error in Blood Pressure Measurement. Copies are available in English, Spanish or French.

W. A. Baum Co., Inc.
620 Oak Street
Copiague, New York 11726 USA
www.wabaum.com

Toll Free: 888-281-6061
Tel: 631-226-3940
Fax: 631-226-3969
info@wabaum.com

Since 1916 Originator and Maker of Accurate Blood Pressure Apparatus Exclusively

Baumanometer®

